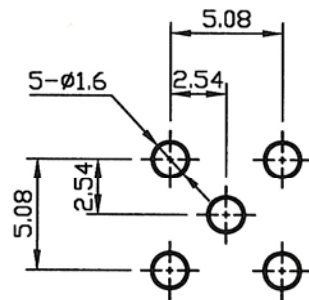
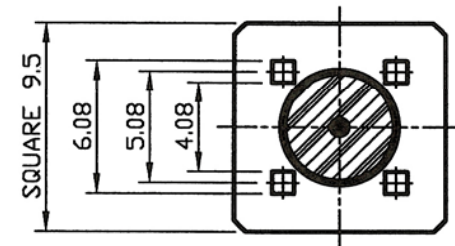


RECOMMENDED MOUNTING HOLES

09	INSULATOR	TEFLON	1	
08	CENTER PIN	BRASS	1	GOLD
07	BODY	BRASS	1	GOLD
06	INSULATOR	TEFLON	1	
05	CENTER PIN	PHOSPHOR BRONZE	1	GOLD
04	INSULATOR	TEFLON	1	
03	PRESS WASHER	BRASS	1	GOLD
02	BODY	BRASS	1	GOLD
01	NUT	BRASS	1	NICKEL
NO	DESCRIPTION	MATERIAL	Q'TY	FINISH



RECOMMENDED MOUNTING HOLES



DIMENSIONS ARE IN MILLIMETERS

SPARKTRONIC CO., LTD.

RoHS COMPLIANT

UNLESS OTHERWISE SPECIFIED

TOLERANCES 0.5-6= ±0.2

6-30= ±0.4

30-120= ±0.6

120-315= ±1.0

315-1000= ±1.6

1000-2000= ±2.4

PART NO.

EE244CU-XNGT75

DATE

September / 23 / 2010

NOT SCALED DRAWING

TITLE: 1.6/5.6 RIGHT ANGLE PCB MOUNT JACK

DRAWING NO.

EE244CU-XNGT75