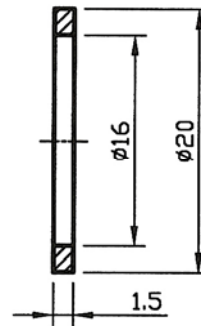
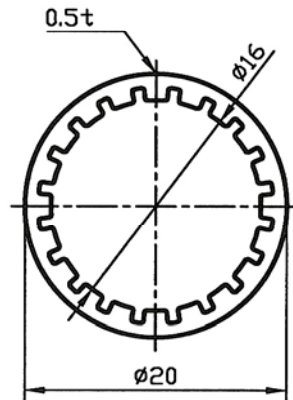
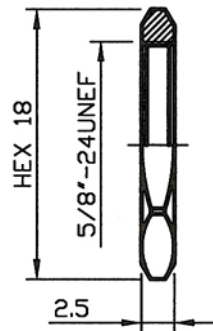
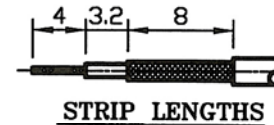


	BODY		PIN	FERRULE		
	A	B	C	D	E	F
RG58			$\phi 1.0$	$\phi 5.6$	$\phi 6.5$	$\phi 12.7$
RG223	$\phi 3.1$	$\phi 4.5$		$\phi 5.8$		
LMR200			$\phi 1.2$	$\phi 5.6$		
LMR240	$\phi 4.0$	$\phi 5.6$	$\phi 1.5$	$\phi 6.6$	$\phi 7.5$	
RG213	$\phi 7.4$	$\phi 9.4$	$\phi 2.4$	$\phi 10.7$	$\phi 12.2$	$\phi 17.8$



08	NUT	BRASS	1	NICKEL
07	WASHER	BRASS	1	NICKEL
06	O RING	SILICONE	1	RED
05	FERRULE	BRASS	1	NICKEL
04	CENTER PIN	PHOSPHOR BRONZE	1	GOLD
03	BODY	BRASS	1	NICKEL
02	INSULATOR	TEFLON	1	
01	BODY	BRASS	1	NICKEL
NO	DESCRIPTION	MATERIAL	Q'TY	FINISH

DIMENSIONS ARE IN MILLIMETERS

SPARKTRONIC CO., LTD.

RoHS COMPLIANT

UNLESS OTHERWISE SPECIFIED

TOLERANCES
 0.5-6= ± 0.2
 6-30= ± 0.4
 30-120= ± 0.6
 120-315= ± 1.0
 315-1000= ± 1.6
 1000-2000= ± 2.4

PART NO. RN207CU-*NGT50

DATE September / 23 / 2010

NOT SCALED DRAWING

TITLE: REVERSE POLARITY N BULKHEAD CRIMP
 JACK FOR RG58, RG223, RG213, KMR200 &
 LMR240 CABLES

DRAWING NO. RN207CU-*NGT50